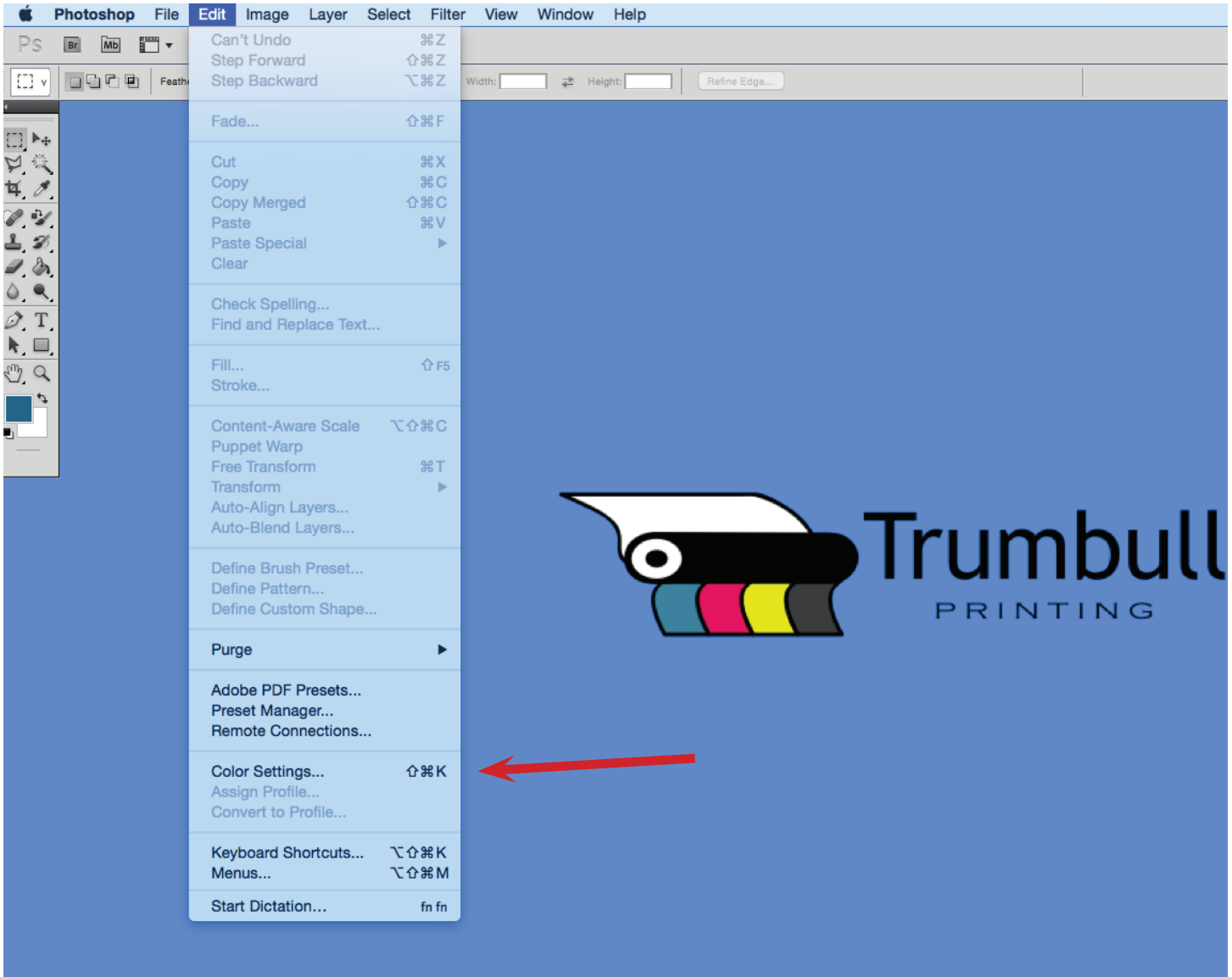


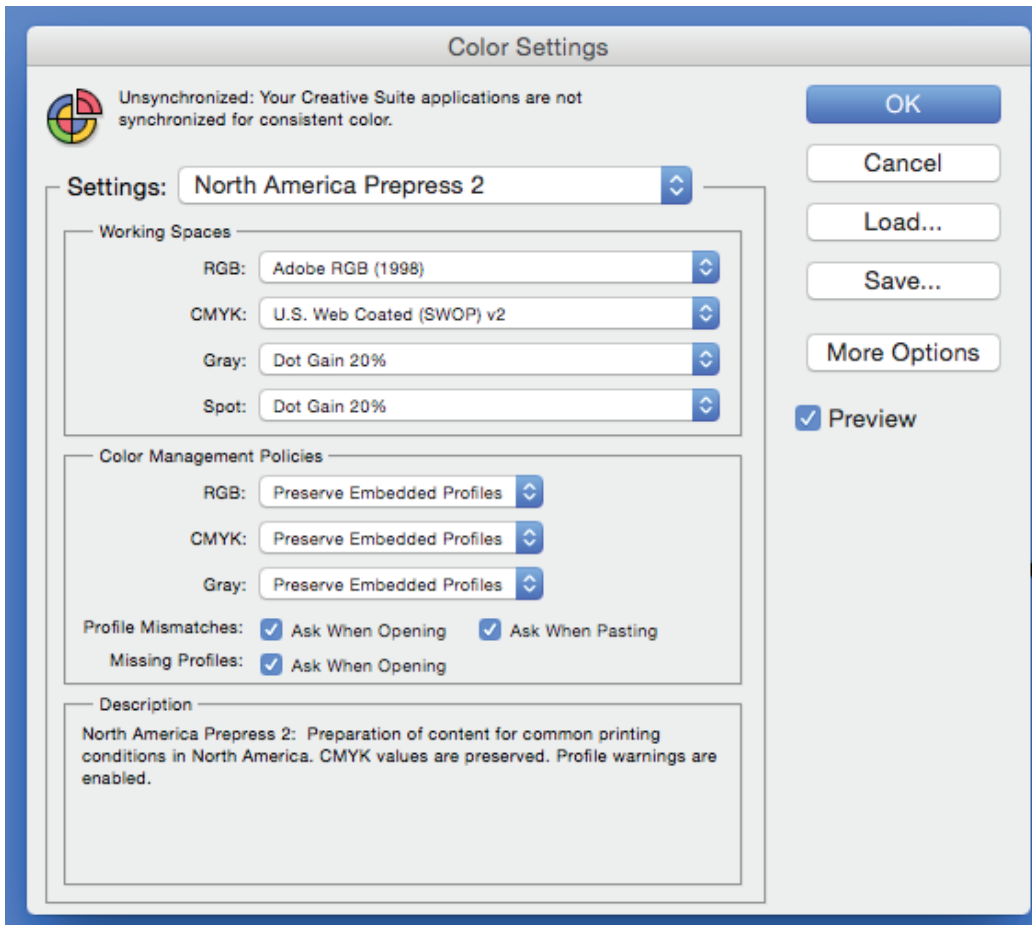
Photoshop Color Settings For Newsprint

This tutorial is to demonstrate how to optimize your Photoshop Settings for cold-web offset presses such as used at Trumbull Printing. Because of the nature of the inks and papers used, these presses tend to have higher dot gain. By using these setting, your photos will experience less plugging, smearing, and off-set. The colors will print brighter and less “muddy”.

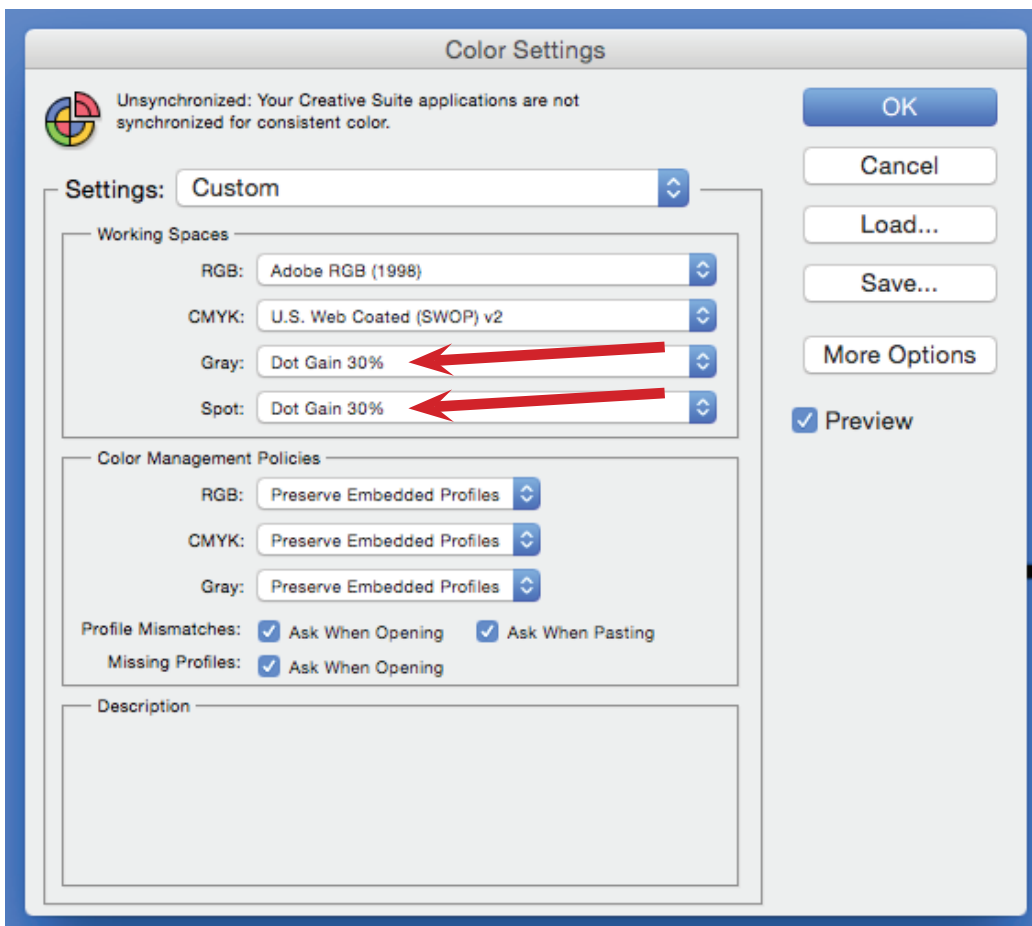
First, open the Color Settings in Photoshop. This is usually found under edit.



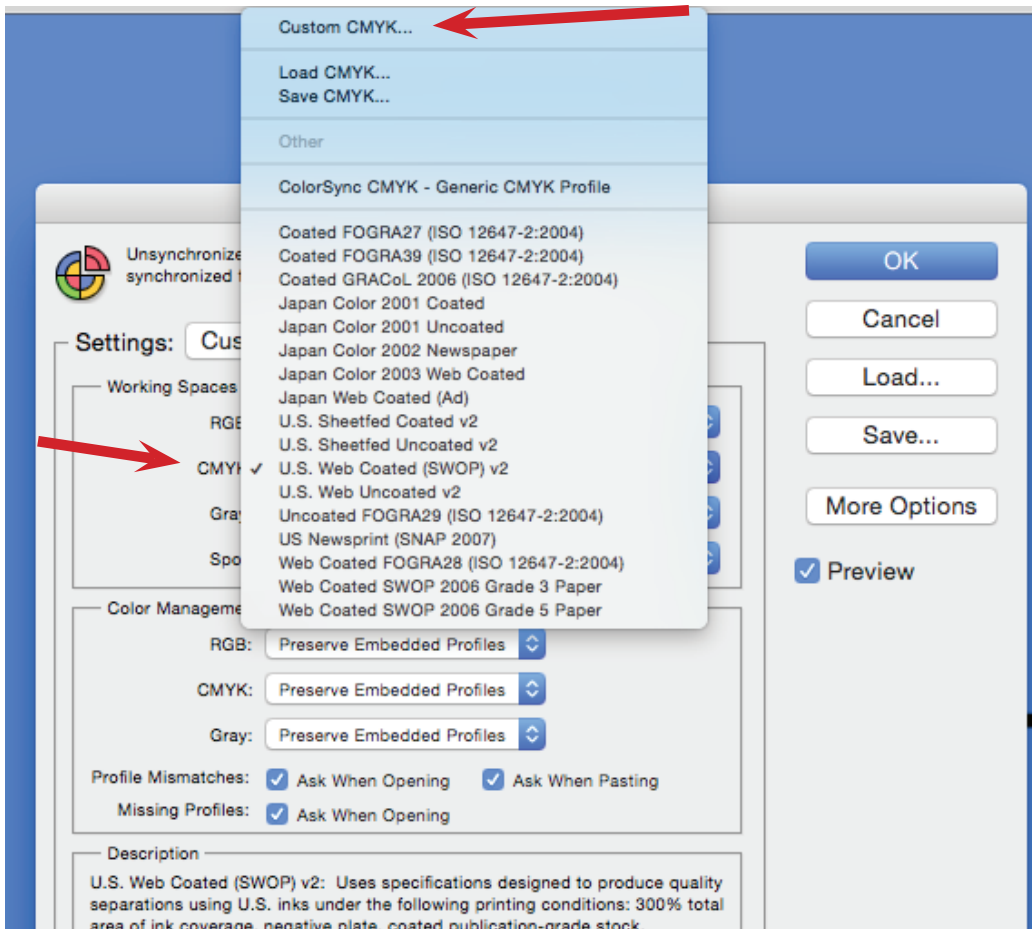
This will bring up the following prompt window:



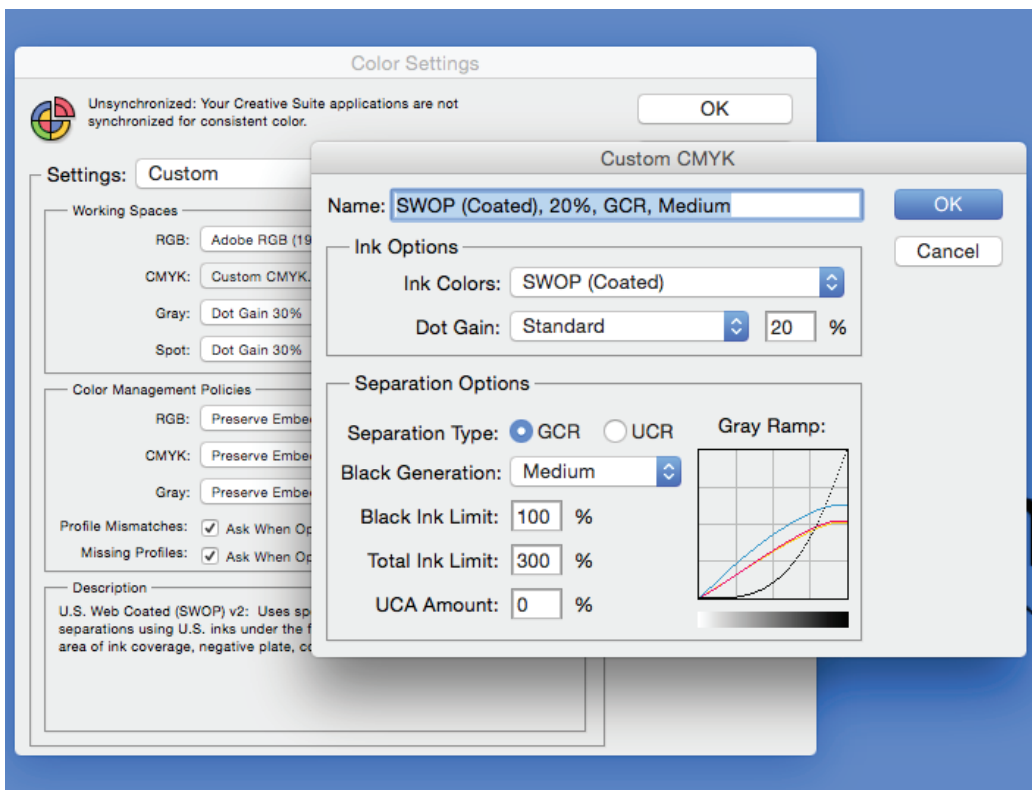
This is usually the Photoshop default setting. First, change the Gray and Spot settings to Dot Gain 30%.



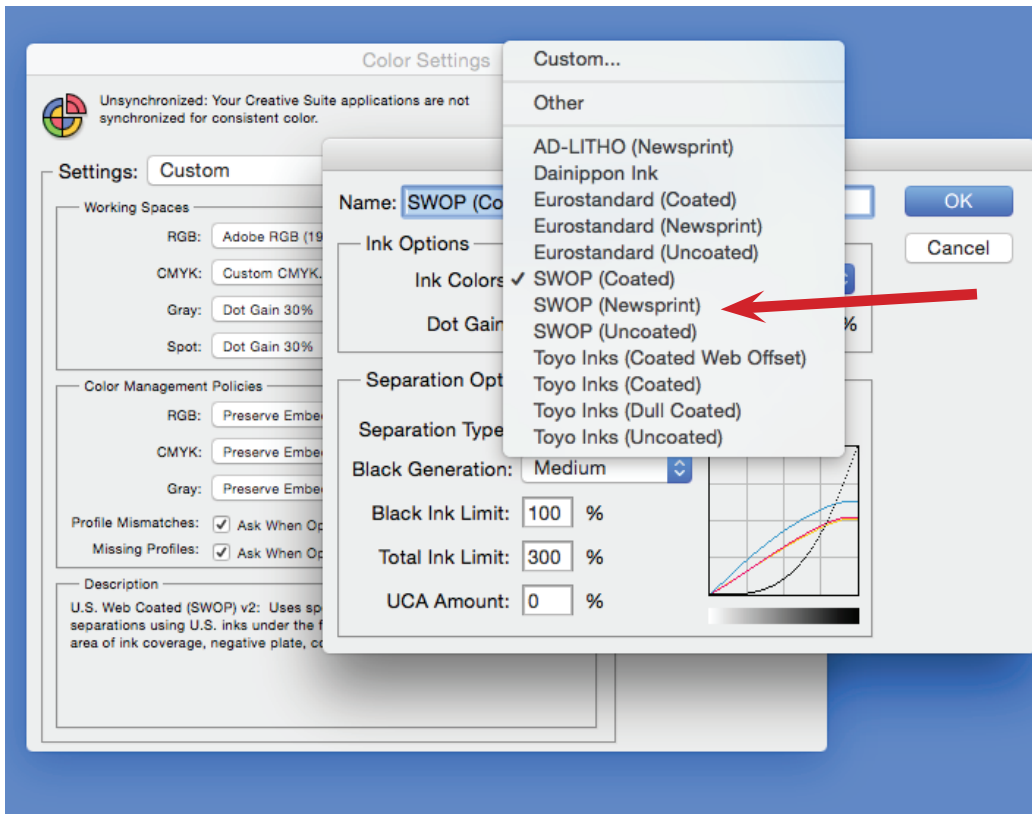
Click on CMYK in working spaces and select Custom CMYK from the drop-down menu. It will be at the top of the list.



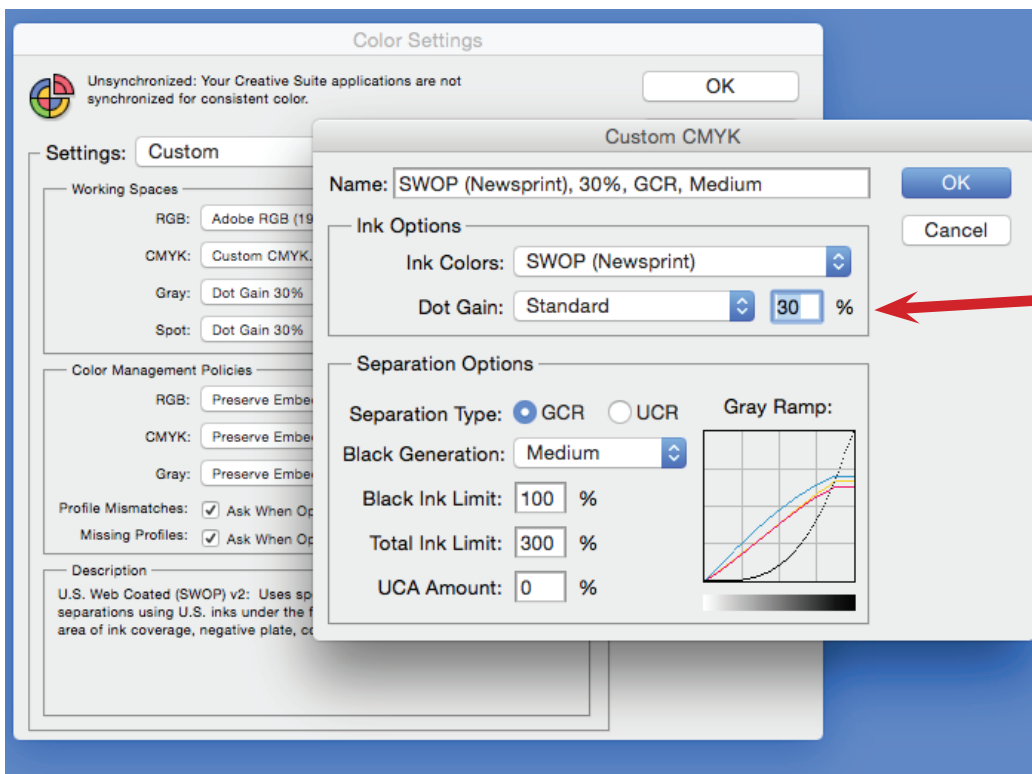
This opens a second prompt window - see next page:



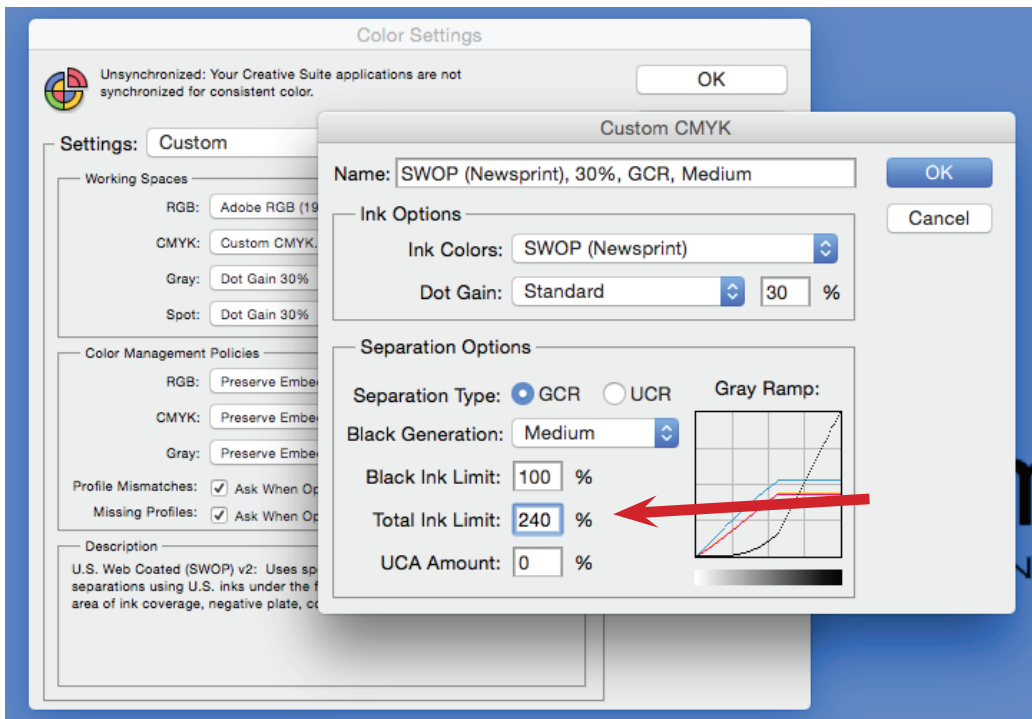
Click on Ink Colors and select SWOP (Newsprint).



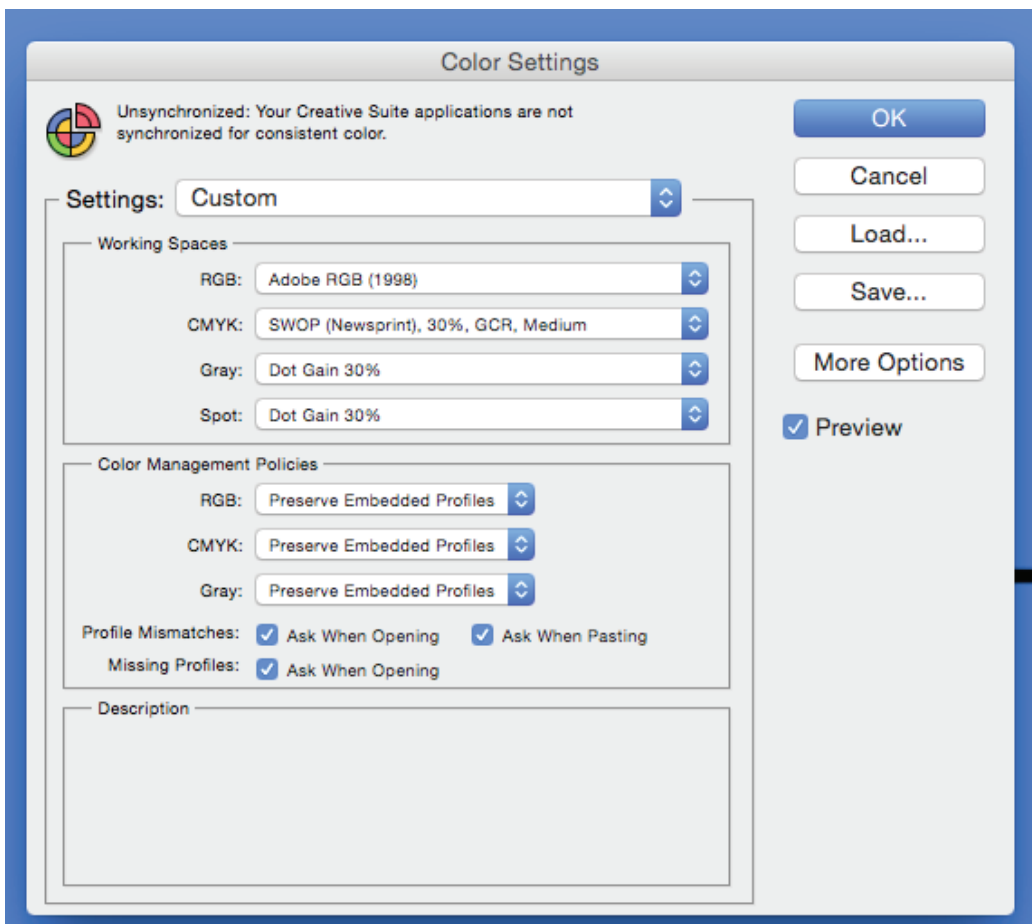
This automatically resets the dot gain to 30%.



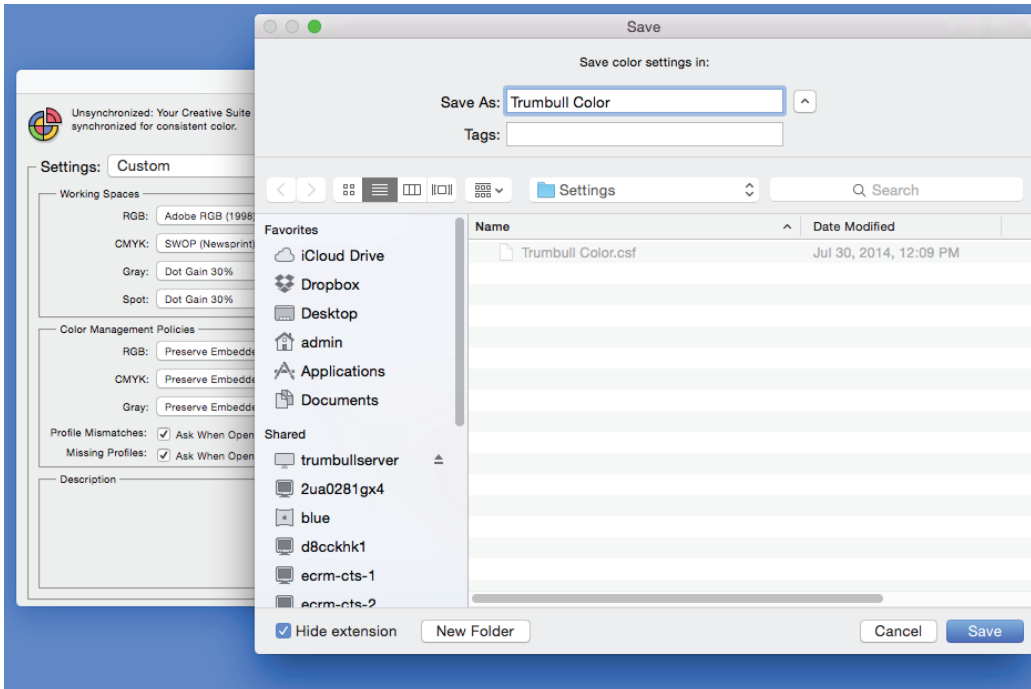
Now reset the Total Ink Limit to 240%.



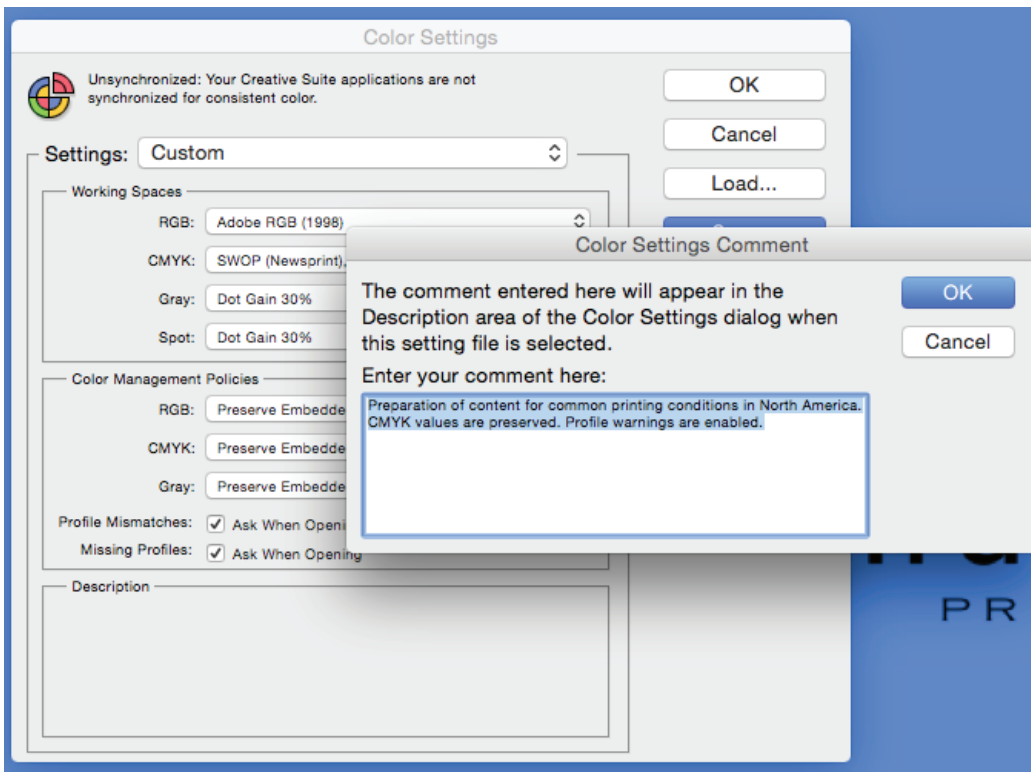
Click OK and you should be left with this:



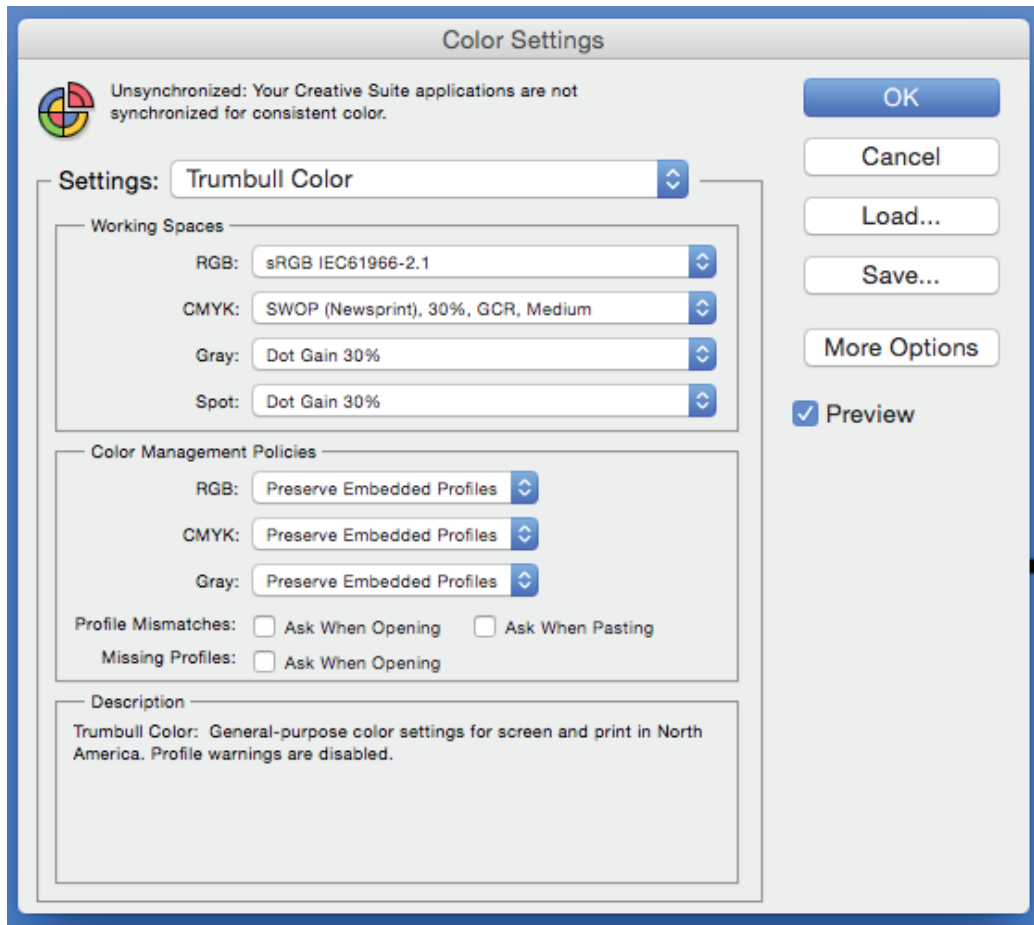
Click Save and name the setting Trumbull Color, then click save:



Photoshop will then ask for a description - I usually leave this blank, just click OK.



Your Color Settings window should now look like this. If you click on the Settings, you will have a drop-down menu that includes the default settings and the Trumbull settings. Simply click OK and now all photos will have these settings once they are converted to CMYK.



Checking PDF Files For Over-Saturation

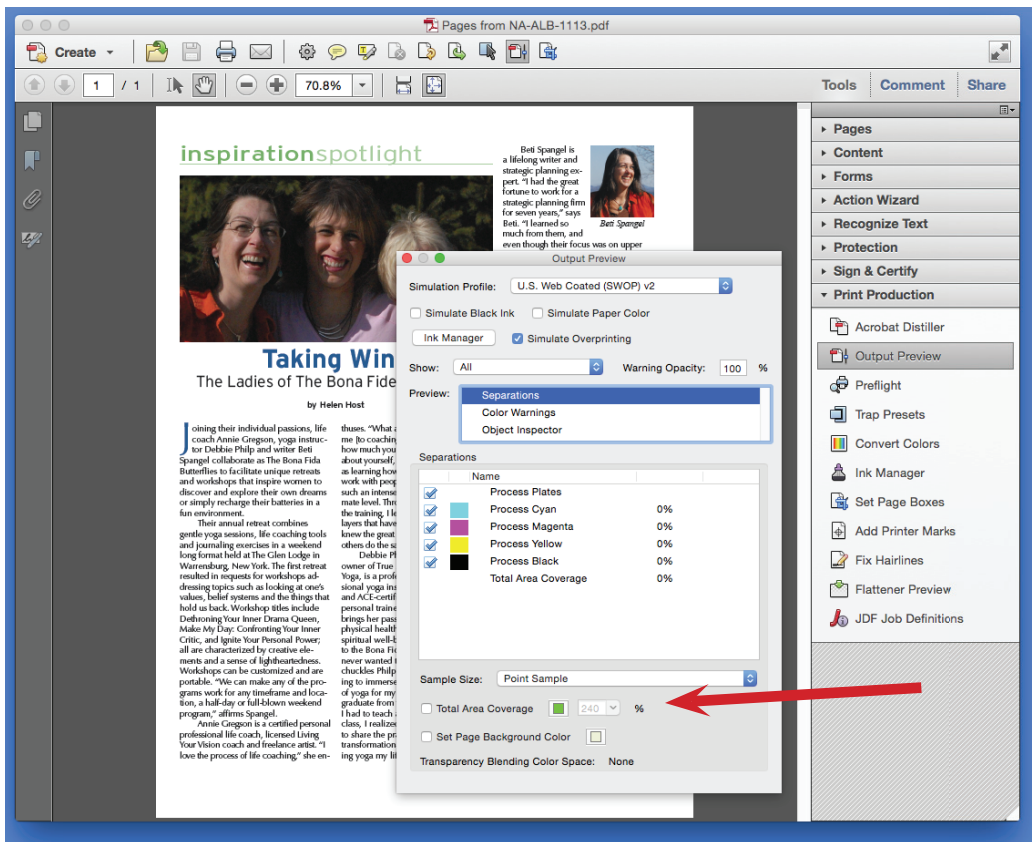
This is easily accomplished using Adobe Acrobat Pro (the free version of Reader does not have these tools).



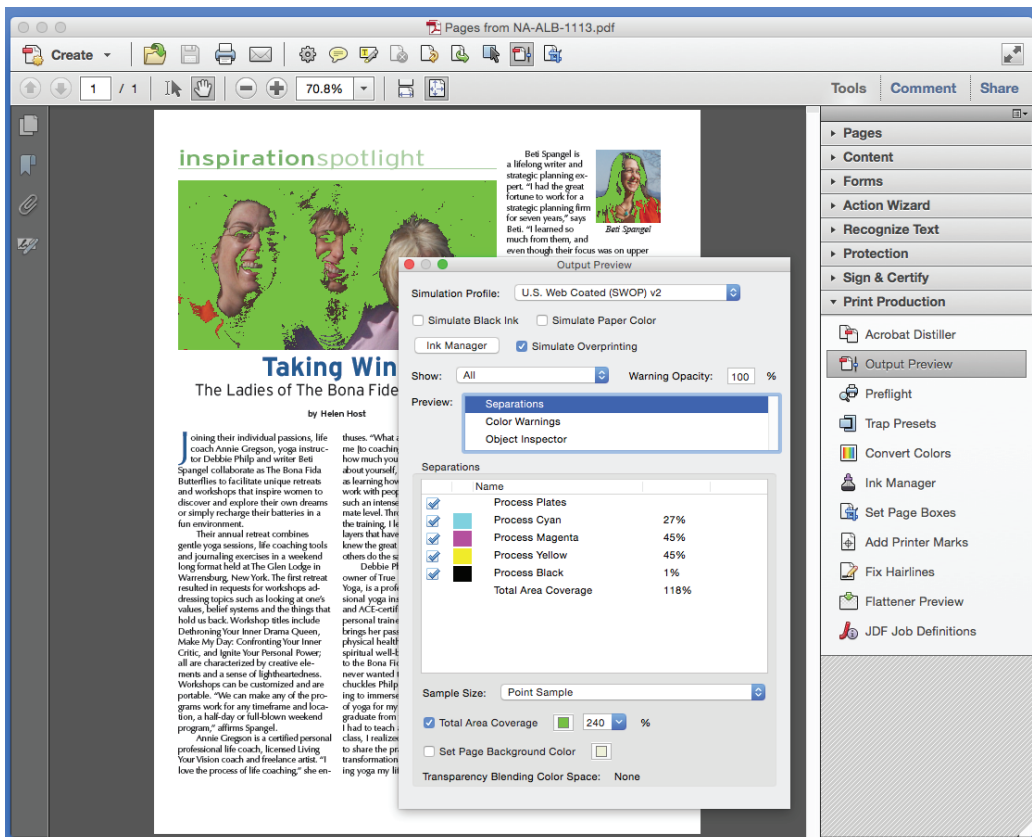
Open the Tools and look under Print Production. Select Output Preview.



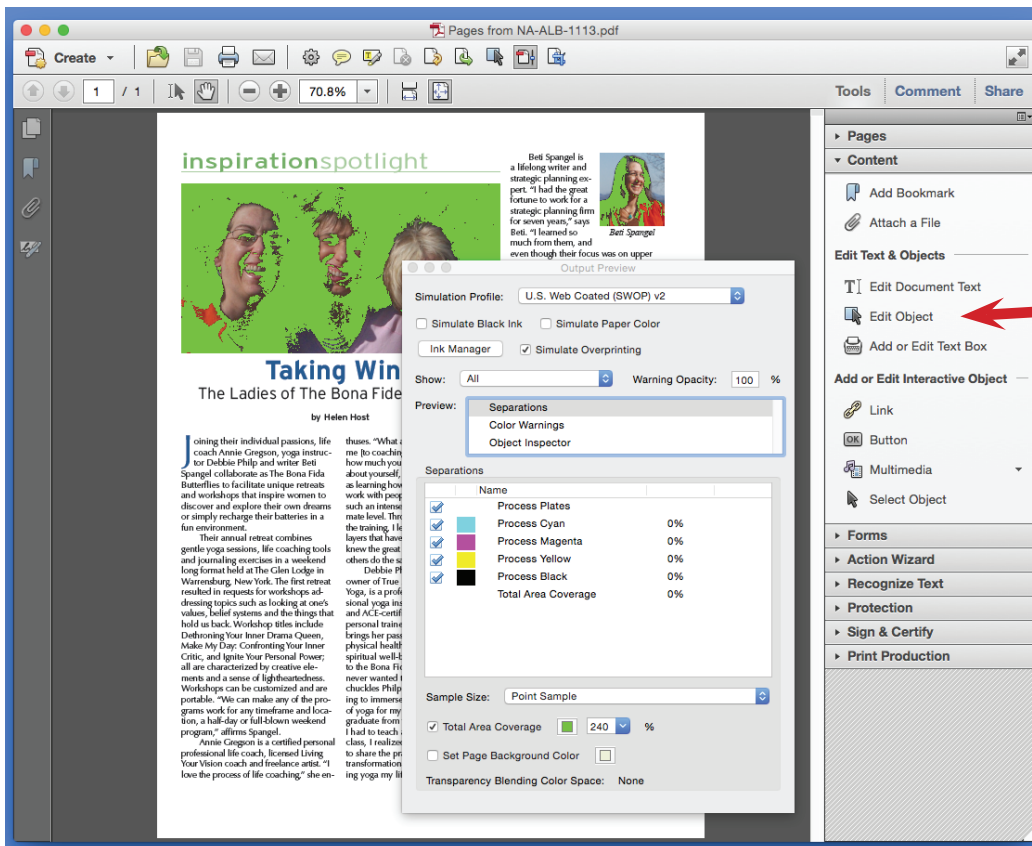
The Output Preview is one of the most useful tools in Acrobat. In this case, click Total Area Coverage and set the percentage to 240%.



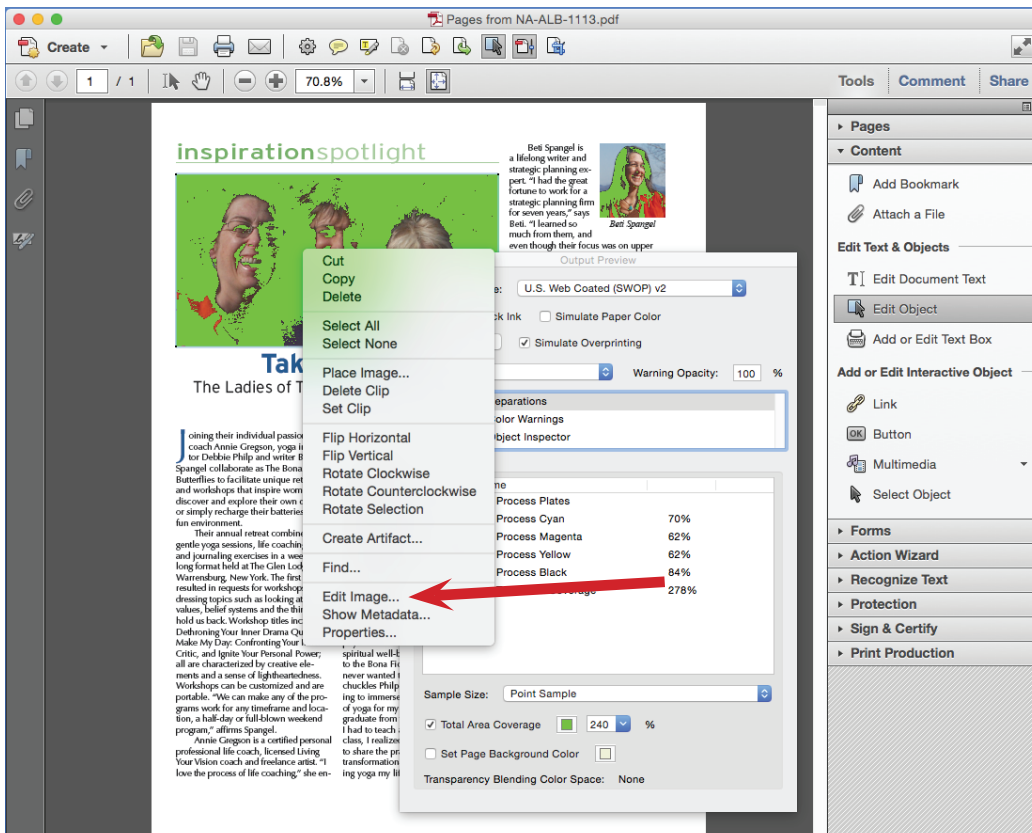
Now, any areas that add up to more than 240% when adding the percentages of cyan, magenta, yellow, and black show up as a bright green.



To fix the saturation, open the Content Tools and select the Edit Object tool.



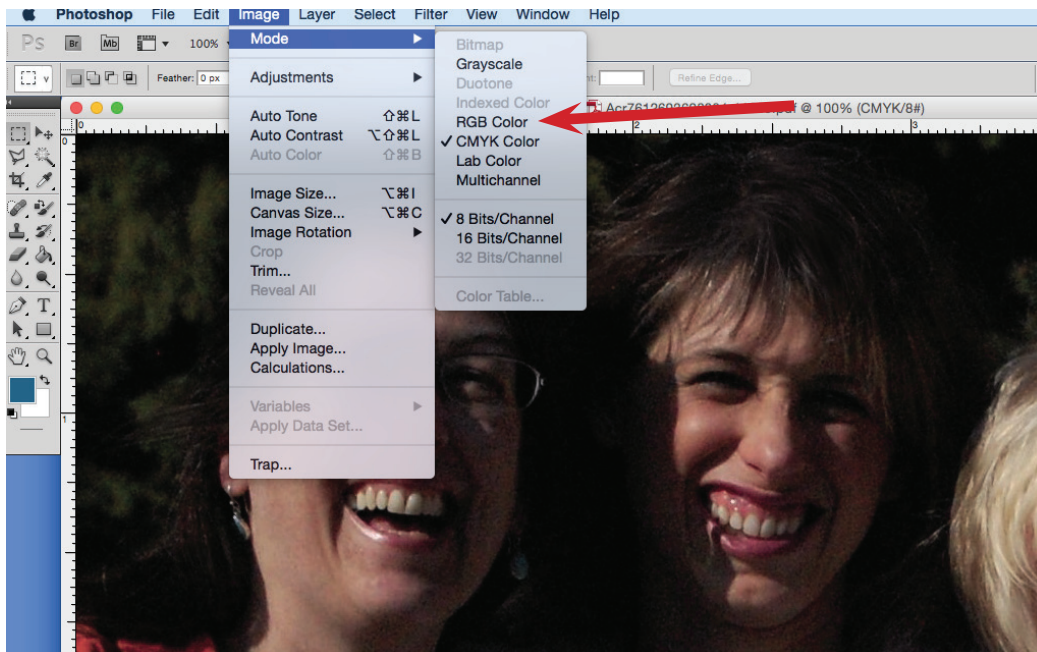
Right-click on the photo and select Edit Image.



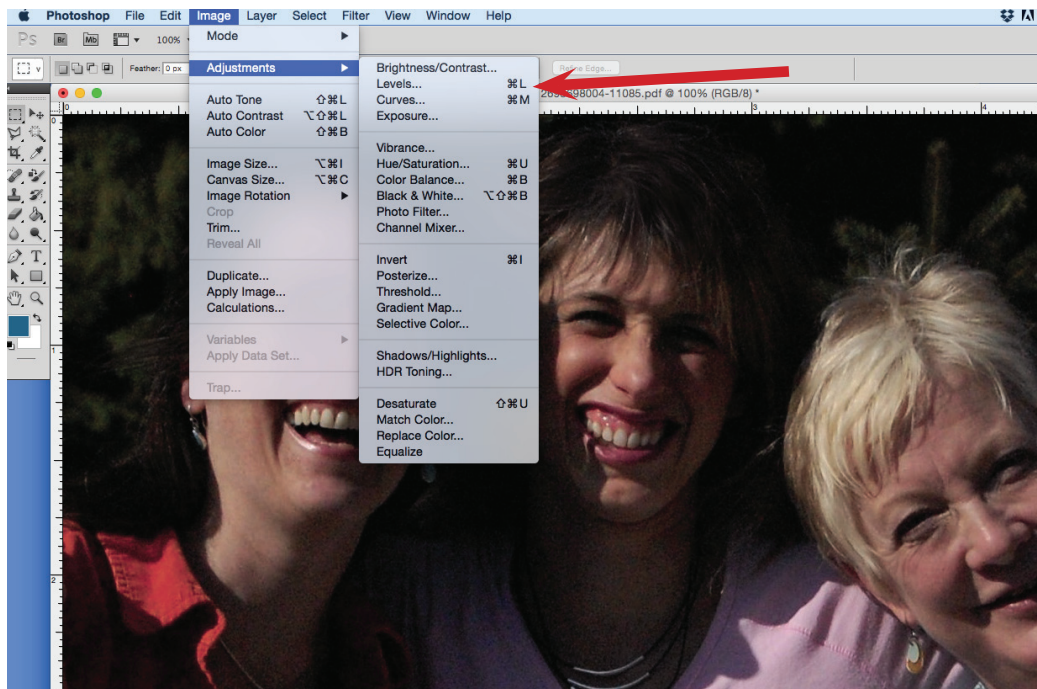
This will open the photo in Photoshop. If your color settings are set for Trumbull Color, you are ready.



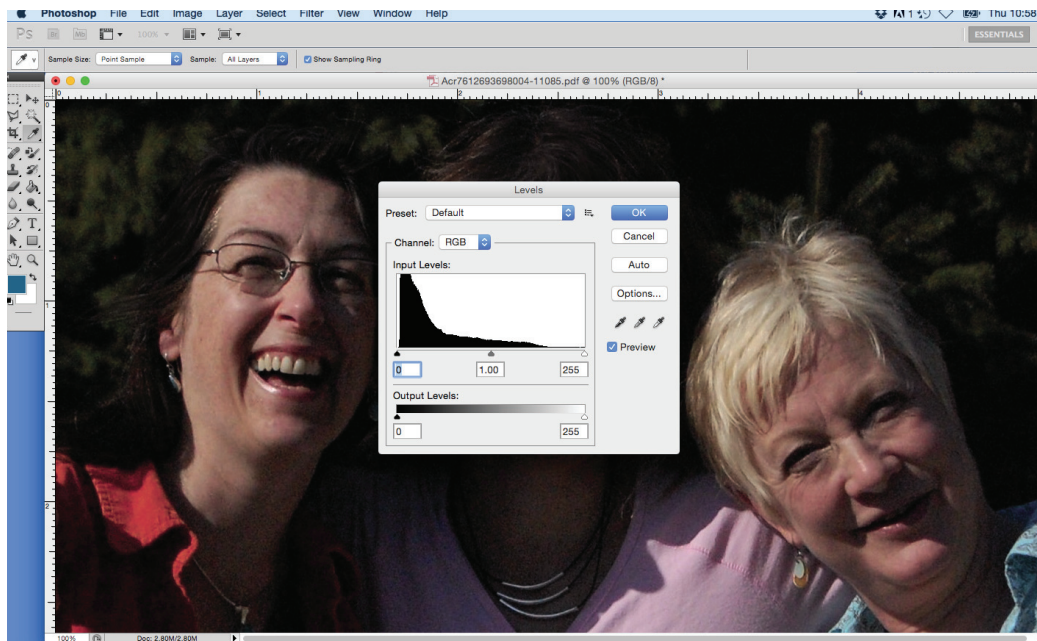
You must convince Photoshop that a change has been made in the photo for the new color settings to take effect. So, first you go to Image/Mode and select RGB Color.



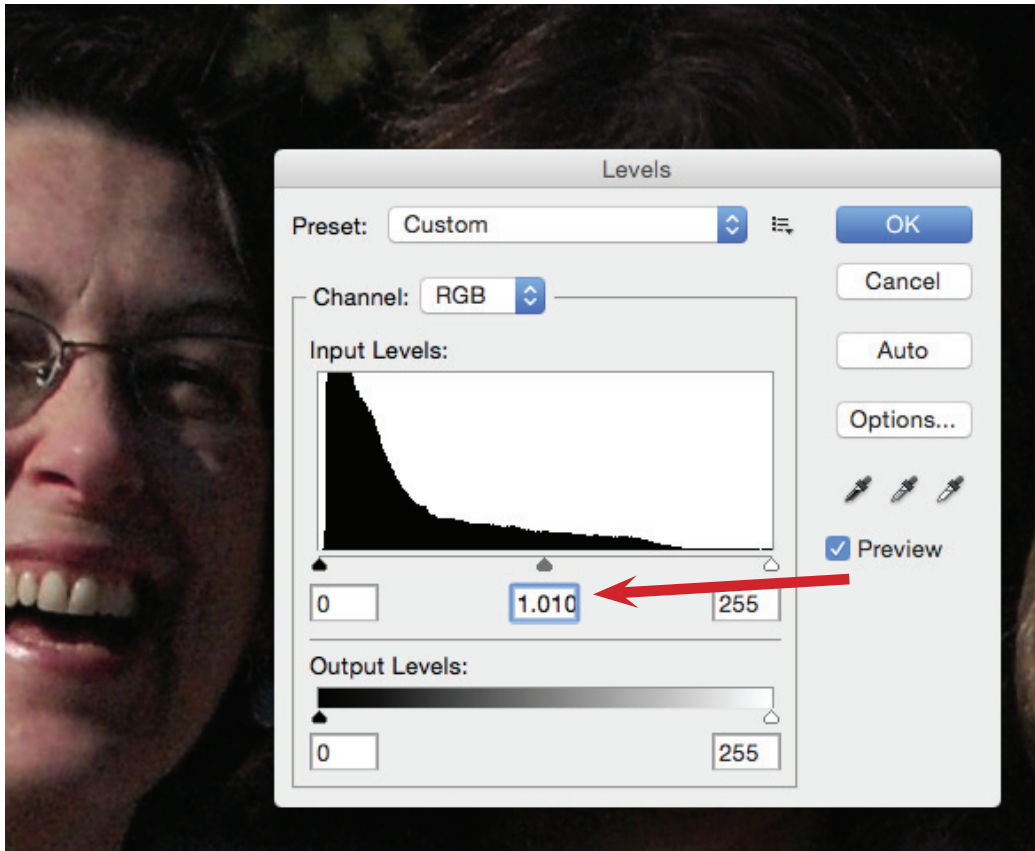
You will now adjust the levels. Under Image/Adjustments, select Levels.



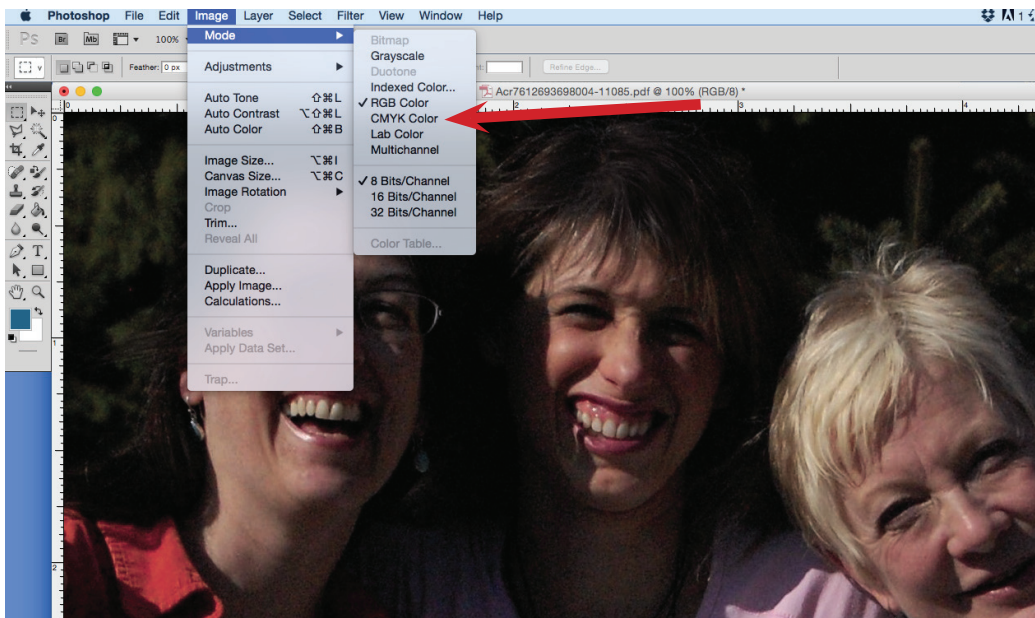
This will open the Levels prompt. You need to make a small change.



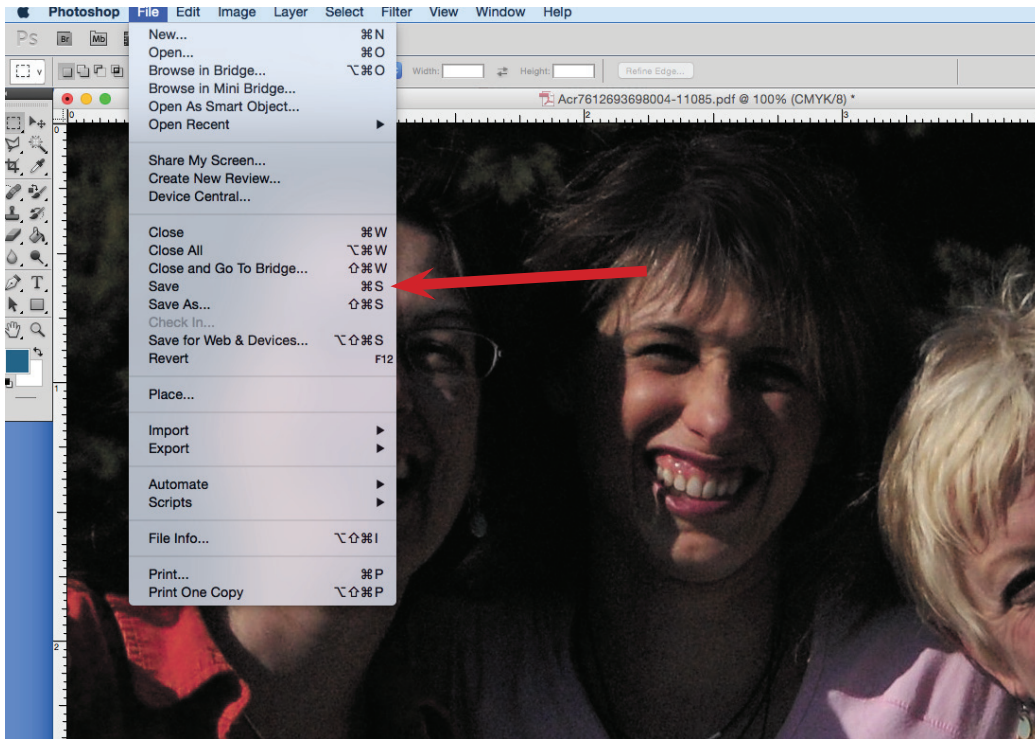
I usually add 0.01 to the midtone. It makes no visual change, but it is enough to let Photoshop know that a change has occurred.



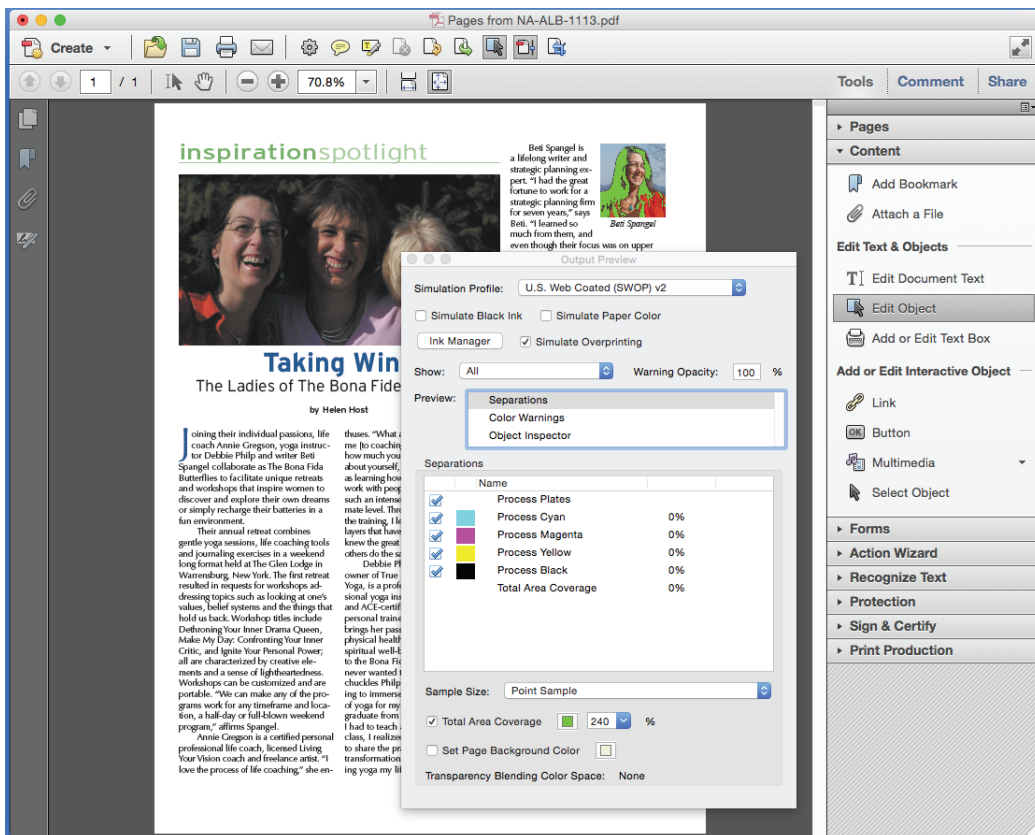
Now go back to Image/Mode and select CMYK Color.



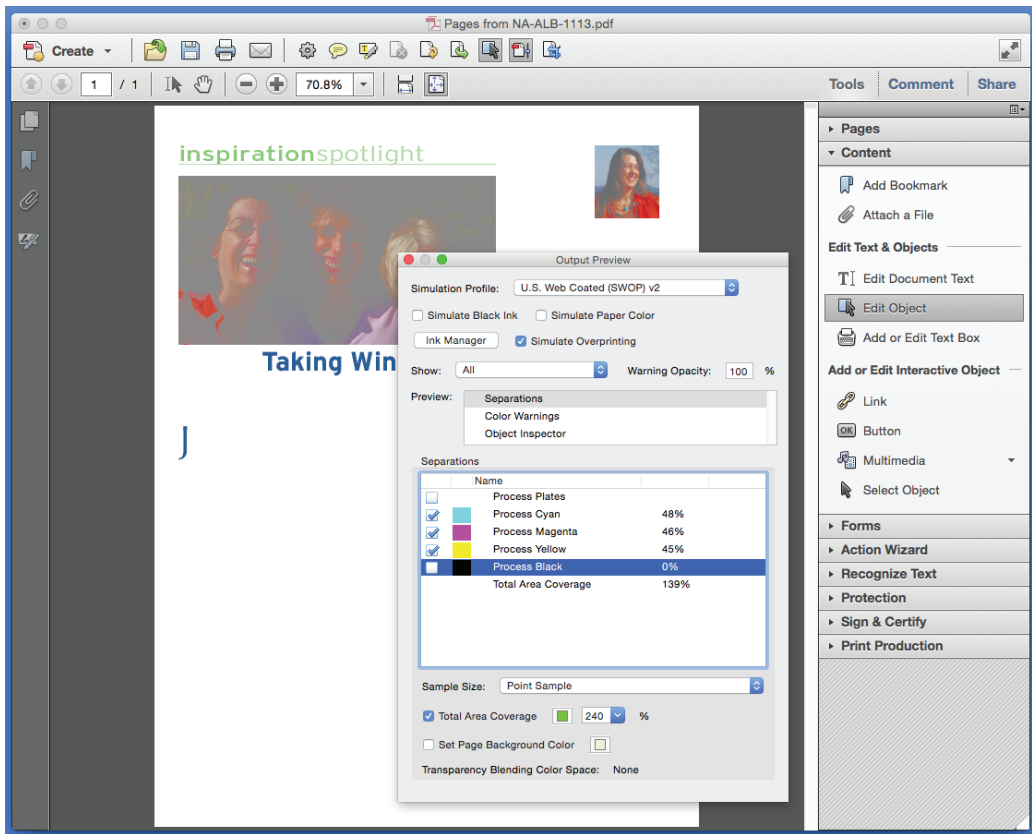
Select Save and close the photo.



Once saved, the photo in the PDF file will be updated as seen below.



The Output Preview can also be used to detect 4-color black type. Simply unclick the black channel and all black type should disappear, as below:



By clicking the Show button, you can also find RGB images. So, again, the Output Preview is quite useful for preflighting PDF files.

